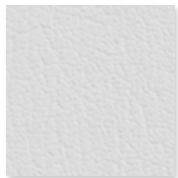
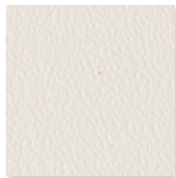




Snow
517918



Snow
517918



White
518802



Wheat
532614



Leapfrog
518780



Seafoam
518418



Reflection
532612



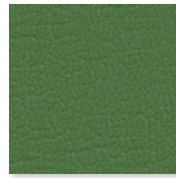
Lite Gray
518781



Natural
517908



Beige
518424



Grass
532618



Jade
518421



Light Teal
518420



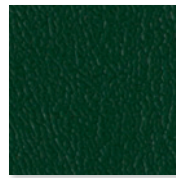
Gray
517423



Saddle Tan
517730



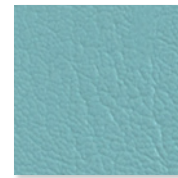
Coffee Cream
518768



Emerald
518772



Sea Grass
518419



Aqua
532616



Gris
532615



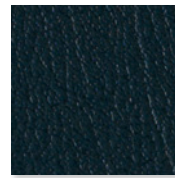
Outback
518790



Camelback
518423



Vizcaya Palm
518386



Spruce
518417



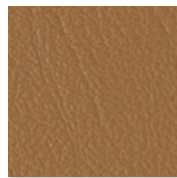
Blue Nile
518762



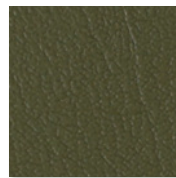
Cadet
518766



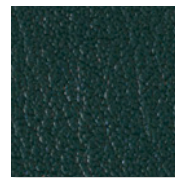
Pumice
518634



Bucksuede
518636



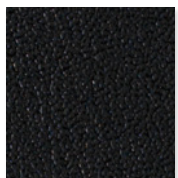
Everglade
518773



Hunter Green
518779



Horizon Blue
518635



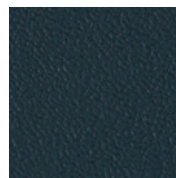
Black
517420



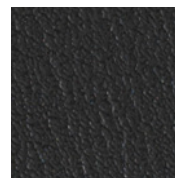
Tea Leaf
518799



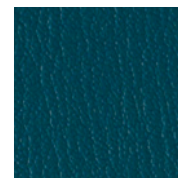
Green Tea
518777



Harbour
518778



Slate
517701



Raintree
518794

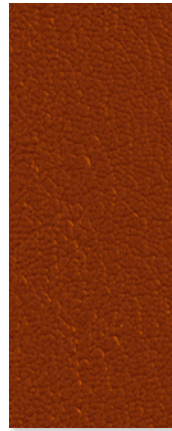
ColorGuard



Dream
532613



Magenta
532619



Manzanita
521374



Marigold
523426



Very Berry
523027



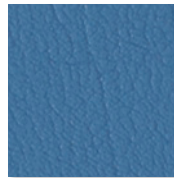
Nasturtium
517921



Candy Apple
518767



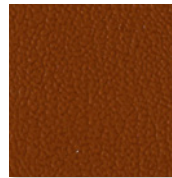
Cerulean
532617



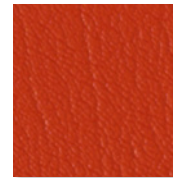
Neptune
517424



Grape
518775



Allspice
518760



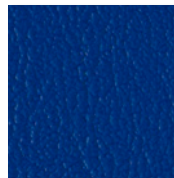
Persimmon
518791



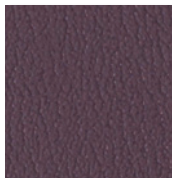
Berry
518761



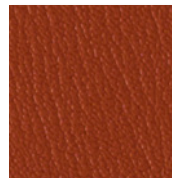
Bluejay
518703



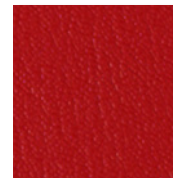
Marina
518784



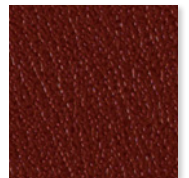
Wood Violet
518804



Deep Clay
518771



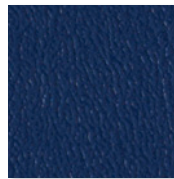
Tomato
518800



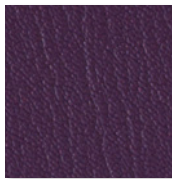
Port
518792



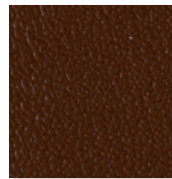
Midnight Blue
518785



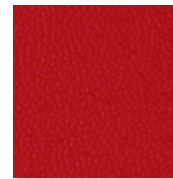
Blueberry
518763



Purple Iris
517919



Chocolate
518422



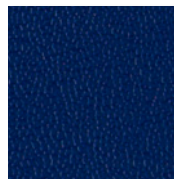
American Beauty
520202



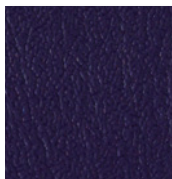
Cordovan
518770



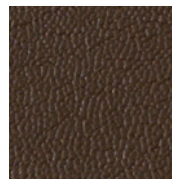
Colonial Blue
518769



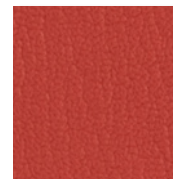
Regal Blue
518705



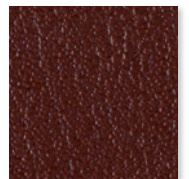
New Purple
520053



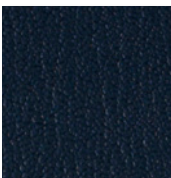
Fudge
517922



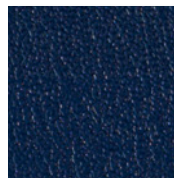
Red Cent
518795



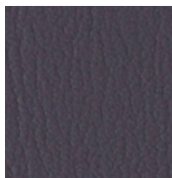
Burgundy
518765



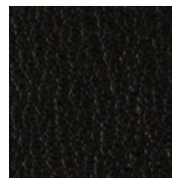
Navy
517920



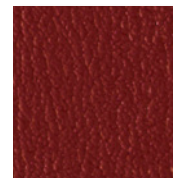
Royal Blue
518796



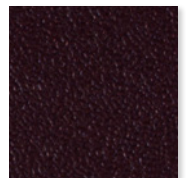
Coal
518647



Otter
518789



New Burgundy
518787



Black Plum
517421



Content 100% PVC face, polyester jersey knit backing

Finish **PreFixx**® protective finish for increased stain resistance and easy cleaning. Bleach cleanable and may be disinfected with a variety of hospital grade disinfectants without discoloring or damaging the finish. Disinfection does not replace the need for regular care and maintenance.

Weight 36 oz/lin. yd [24 oz/yd²] / 1,089 g/lin. m [794 g/m²]

Width 54 in [137 cm]

Performance Requirements Meets or exceeds ACT Performance Guidelines



Also meets or exceeds:

- CFFA-1a Wyzenbeek - 1.3 million double rubs (cotton duck abradant)
- Fungal resistance ASTM G-21-13
- Bacterial resistance AATCC 147-2011 & AATCC 100-2004
- BIFMA, Class A
- California Technical Bulletin 117-2013, Section 1
- FAR 25.853a & Appendix F Part 1 (a)(1)(ii)
- Federal Specification CID A-A-2950A
- FMVSS-302
- IMO Part 8 Upholstered Furniture 3.1 Smoldering Cigarette
- IMO Part 8 Upholstered Furniture 3.2 Propane Flame
- NFPA 701 Small Scale
- NFPA 260, Class 1
- Port Authority of NY/NJ
- UFAC Fabric, Class 1



Applications Indoor/Outdoor

- Corporate Office • Food Service • Healthcare • Hospitality and Entertainment
- Recreational Vehicles • Retail • Marine

Though our upholsteries can be used in many applications, customers are responsible for selecting an upholstery with attributes that meet the requirements of the specific end-use application – not all upholstery is suitable for all applications.

Multiple factors affect fabric durability and appearance retention, including end-user application and proper maintenance. Wyzenbeek results above 100,000 double rubs have not been shown to be a reliable indicator of increased fabric lifespan.

For additional cleaning instructions and detailed specification information, visit: www.textilehouse.co.nz



Textile House
TRANSFORMING VISIONS INTO EXCELLENCE

Distributed in New Zealand by:

Textile House
100 John Street, Pukekohe 2120
W | www.textilehouse.co.nz
E | sales@textilehouse.co.nz
P | 0800 644 445

